

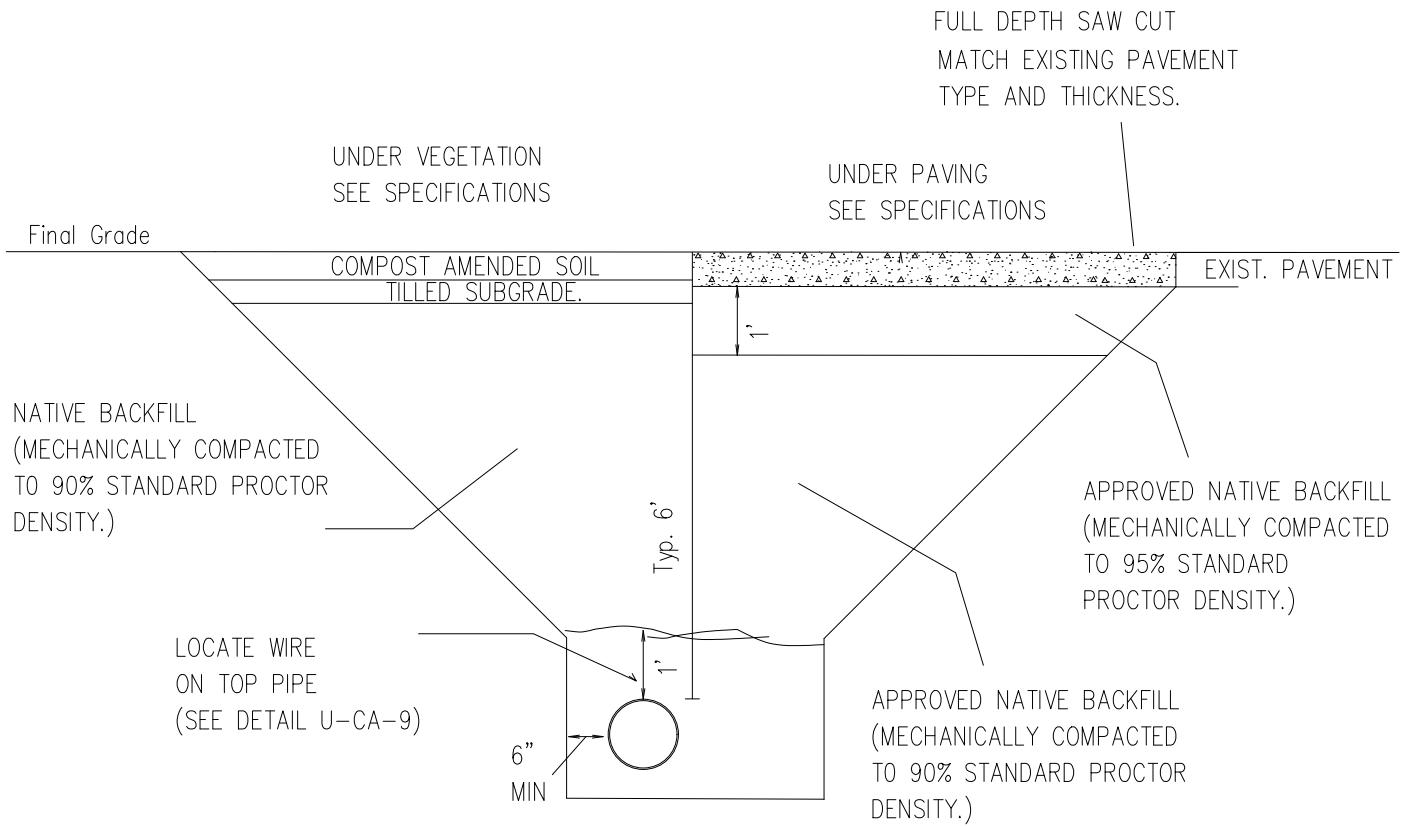
NOTES:

1. METER, AND ELLIPTICAL FLANGES TO BE FURNISHED BY OWNER AND INSTALLED BY CONTRACTOR.
2. THERE SHALL BE NO WALL OR OBSTRUCTION WITHIN 12" OF METER IN ANY DIRECTION..
3. ALL BOLTS TO BE CADMIUM PLATED
4. ALL PIPE BETWEEN REDUCERS TO BE 2" COPPER.
5. METER SHALL BE INSTALLED WITH THE DISPLAY SURFACE FACING UPWARDS.

STANDARD 2" WATER METER

Mechanical Detail
U—DW—2

Rev 9/19/20



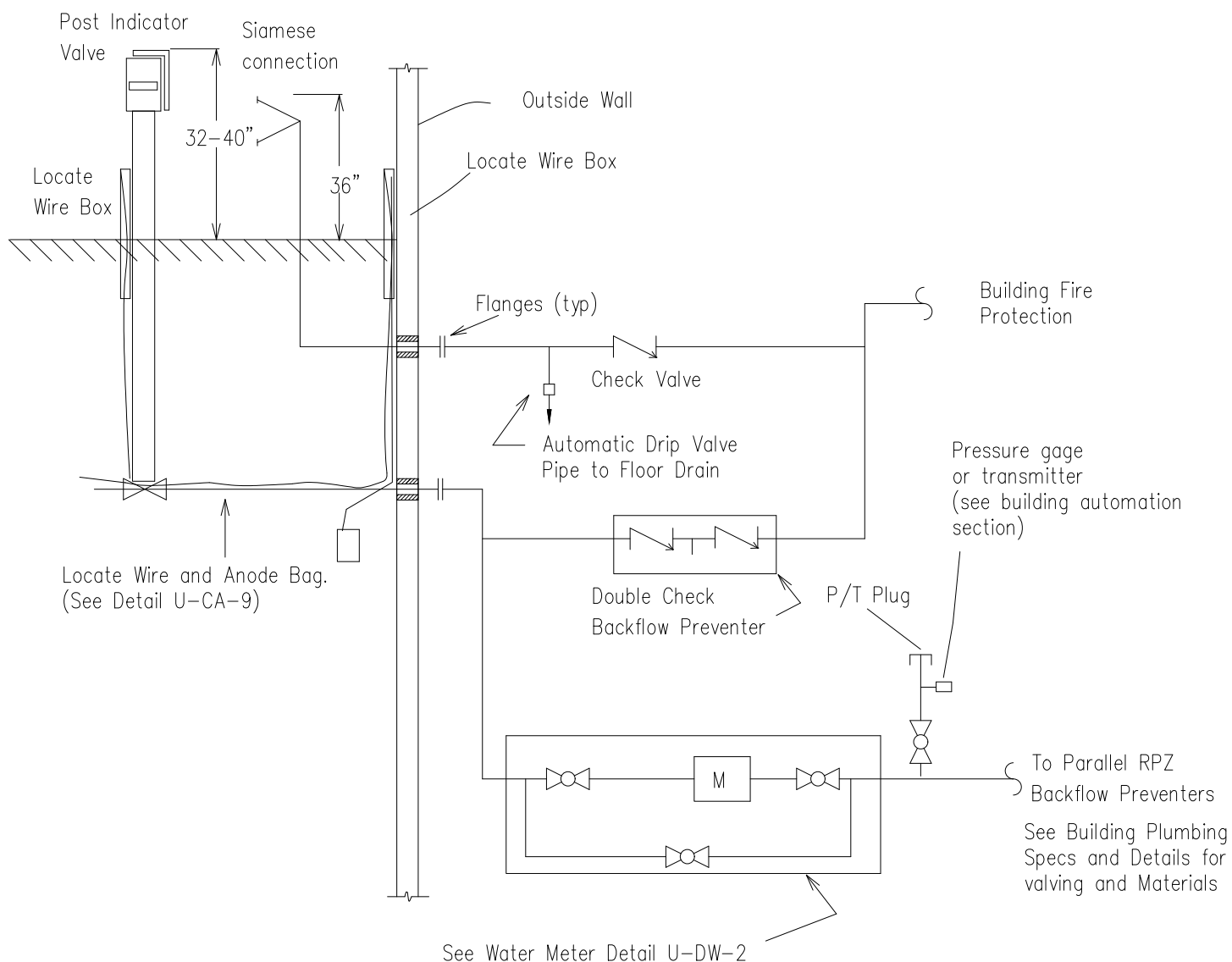
TRENCH SLOPES SHALL CONFORM TO OSHA STANDARDS.

PIPE	BEDDING	TO CENTERLINE OF PIPE	1' COVER
DUCTILE IRON	NATIVE MATERIAL AS PER SPEC	NATIVE MATERIAL HAND TAMPED	NATIVE MATERIAL HAND TAMPED
HDPE	1" WASHED ROCK	1" WASHED ROCK HAND TAMPED	NATIVE MATERIAL HAND TAMPED

STANDARD DOMESTIC WATER PIPE TRENCH

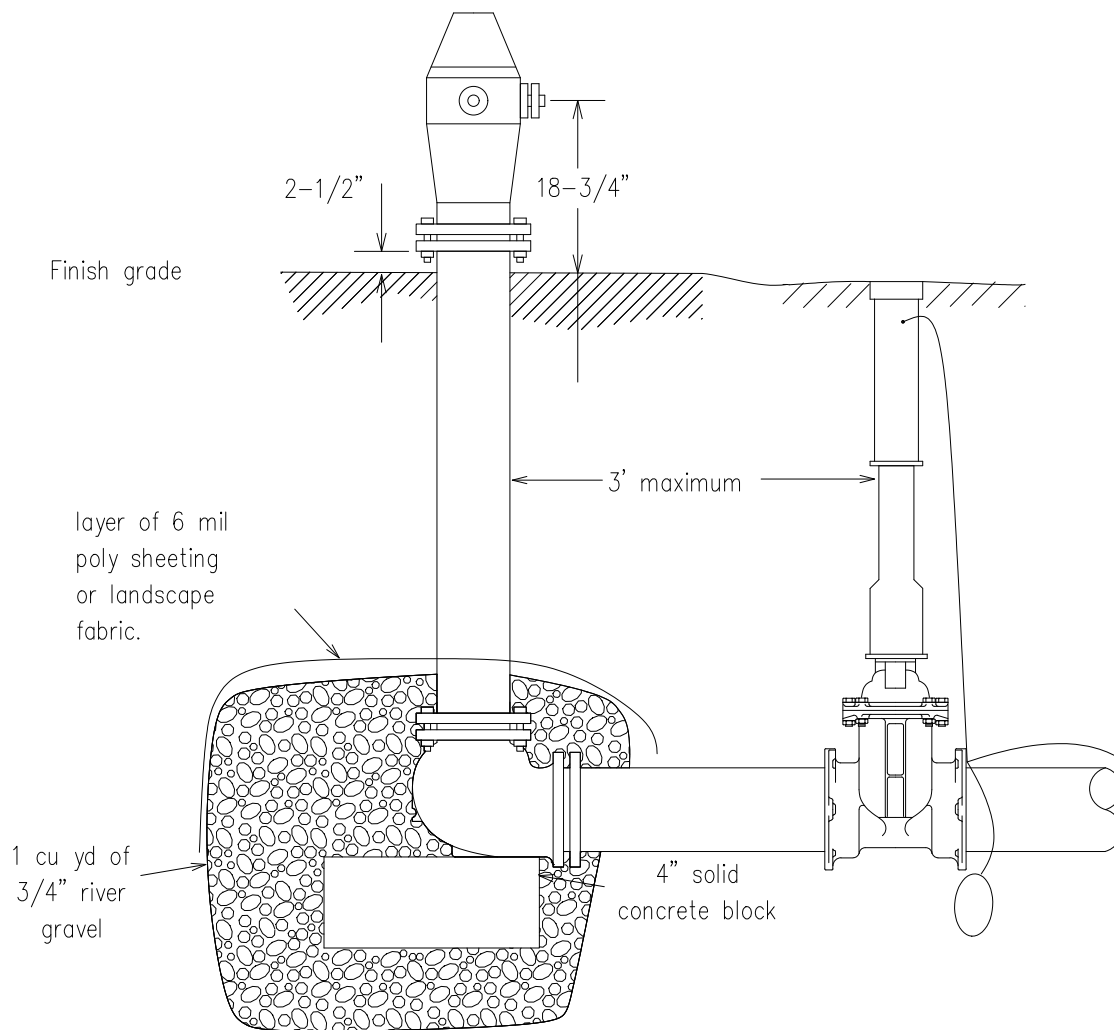
Mechanical Detail
U-DW-4

Rev 8/19/14



Notes:

1. Post Indicator Valve Contractor Furnished and installed with electric monitor switch. (Conduit and wiring to Fire Alarm Panel per spec.)
2. Siamese connection shall have two 2-1/2" diam female outlets (7-1/2 threads/inch) as per spec. Wall mount or remote mount as shown on drawings.
3. All underground normally dry piping pipe to have a minimum of 5' cover.
4. Owner shall confirm location of PIV and Siamese connection with Ames Fire Department.



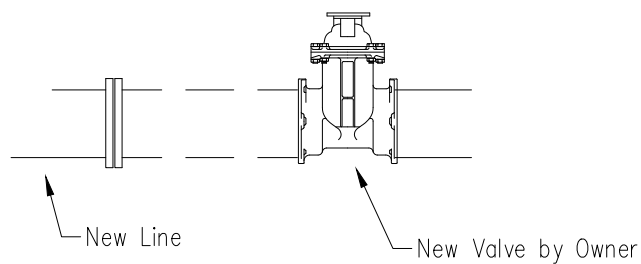
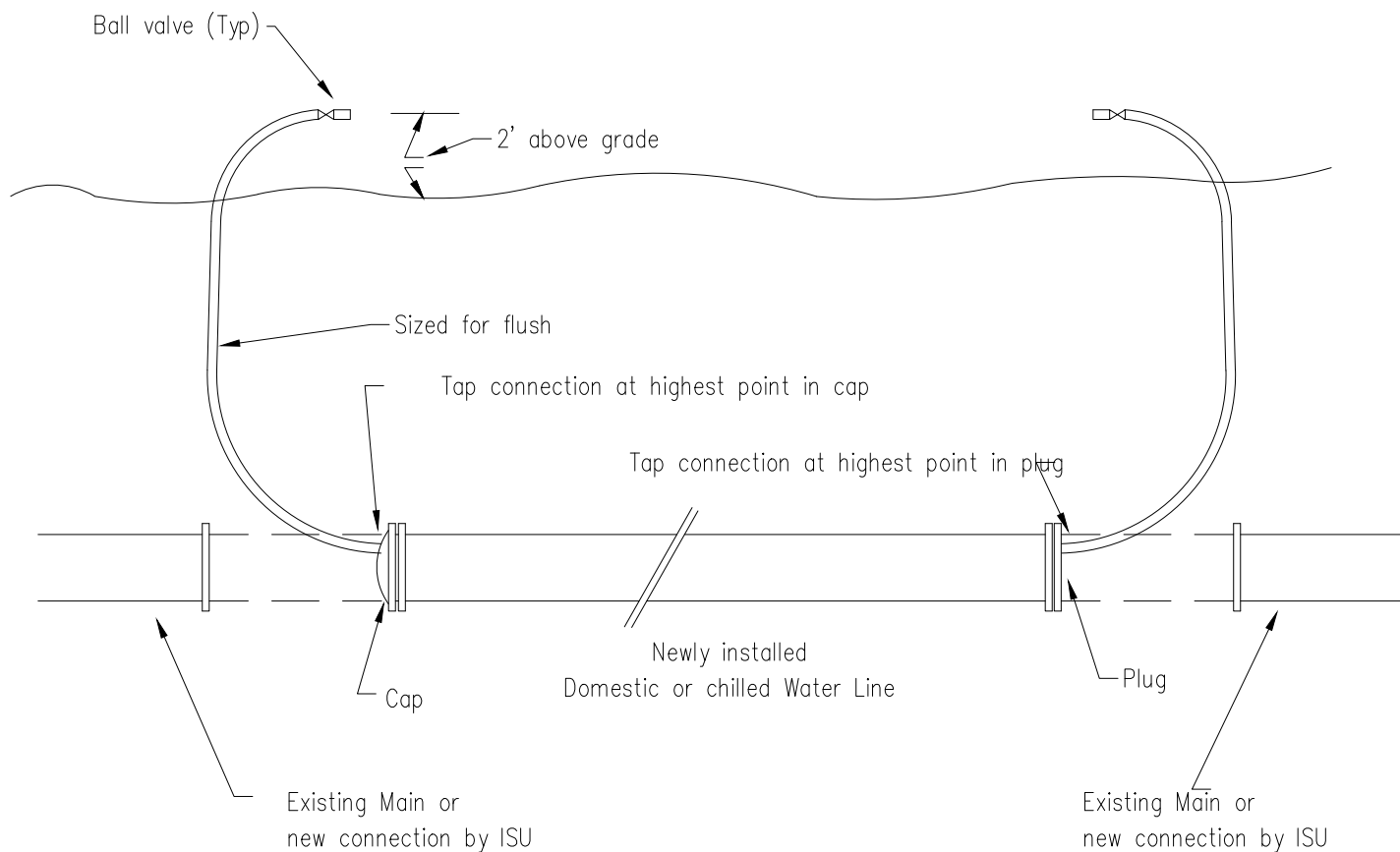
Notes

1. No thrust block to be used.
2. Compact rock from subgrade to block before setting block.
3. All piping joints to be restrained joint per specifications..
4. See detail U-CA-9 for locate wire. Locate wire ends at valve box.

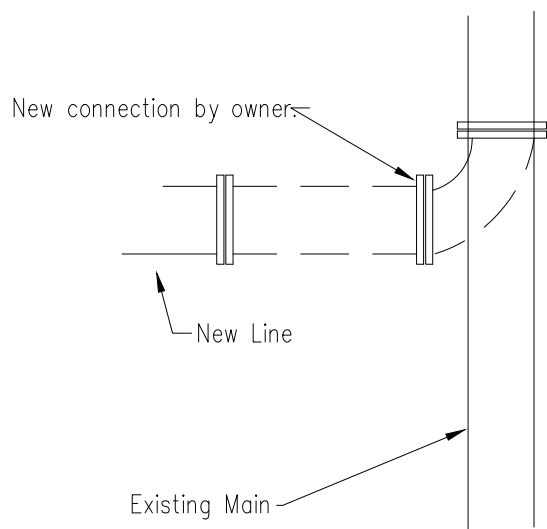
STANDARD FIRE HYDRANT

Mechanical Detail
U-DW-5

Rev 8/19/2014



Connection example for new line.
(Valve and tap on main installed by owner)



Connection example for new line.
(cutting into existing line done by owner)

Notes

1. New line to be installed at line and grade such that connection to existing line can be made using only a section of straight pipe and a solid sleeve.
2. Newly installed line can be completely backfilled for safety reasons prior to testing. End of copper test line must not be buried.
3. ISU Utilities to make final connection to existing pipe after ISU Utilities Department has completed testing.

STANDARD WATER CONNECTION

Mechanical Detail
U—DW—6

Rev 1/14/13